

KRN Services

1761 George Washington Way #383 Richland, WA 993564

KRN150 Sensor

Mechanical Specifications:

Dimensions: 0.71" dia x 0.61" h
(18mm x 15.5mm)

Temp Range:
- 10 to 220°C

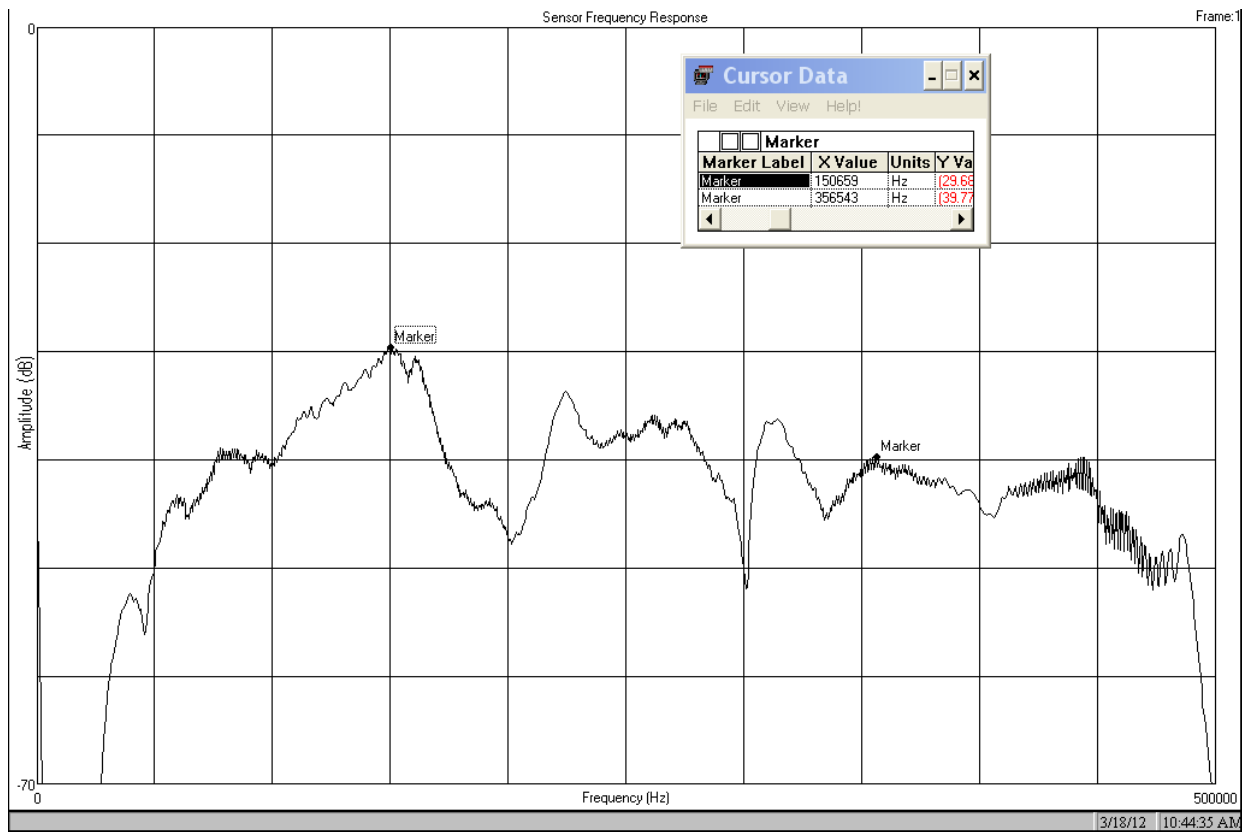
Weight: 0.81 oz
(23 gms)

All Stainless steel construction with electrically isolating ceramic face

Connector: Side mount male 10-32 (Microdot)



Typical Face to Face Sensor Spectral Response



Swept Input Signal VRMS = 0.035 / Source Voltage: Swept 11 – 475 / Sweep Rep Rate = 14 mSec

Source Crystal: Panametrics V101 kHz / Preampifier: KRNBB, 40dB

Represented in North and Central America by: Acoustic Technology Group, Inc;
www.acoustictechnologygroup.com